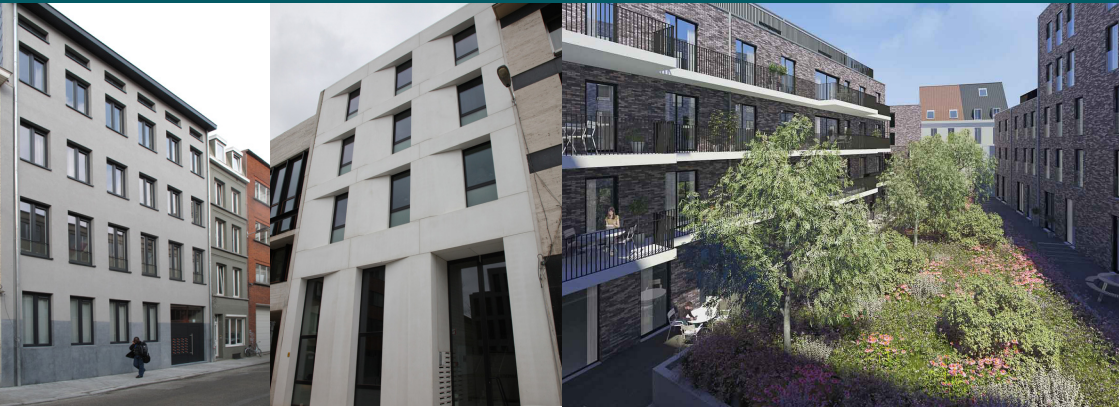


ITM STUDENT RESIDENCES



Sint-Rochusstraat 32, 34 & 38 (Karibu)
Sint-Rochusstraat 21 (Napay)
Bogaardestraat 8 (Namasté)

2000 Antwerpen



INSTITUTE
OF TROPICAL
MEDICINE
ANTWERP



NAPAY

Sint-Rochusstraat 21

NAMASTE

Bogaardestraat 8

KARIBU

Sint-Rochusstraat 32, 34, 38

ITM STUDENT RESIDENCES

Contact : Student Support

Tel : +32 (0)3 345 54 84

E-mail : studentsupport@itg.be

Studentenondersteuning – Student Support

Campus ROCHUS

Sint-Rochusstraat 43

2000 Antwerp

Postal address

Nationalestraat 155

2000 Antwerp

KARIBU: Sint-Rochusstraat 32, 34, 38

Exterior



Room with private bathroom and shared kitchen



Studio with private kitchen and private bathroom



Family room with private kitchen and private bathroom



CAPACITY

- 63 rooms with private bathroom, some with balcony and garden view
- 3 studios (29 m²) with private facilities (bathroom and kitchenette)
- 3 family rooms (44 m²) with private facilities (bathroom and kitchenette)
- 10 shared equipped kitchens
- Washing machine, dryer and iron at your disposal
- Terrace (not all rooms)

ROOMS

- Single bed with bedside table
- Desk with chair, wardrobe, bookshelves
- WIFI internet
- Television
- Bathroom with toilet, shower and laundry basket
- Refrigerator in the room
- Towels, bedding and duvet are provided
- Fortnightly cleaning service

A double bed in the studios; an additional sofa bed in the family rooms

PRICES

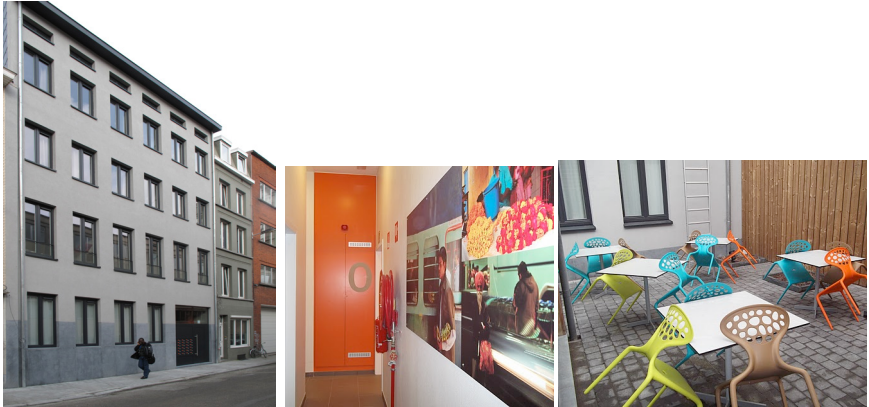
	KARIBU > 3 MONTHS		
Type	Monthly price	Weekly price	Daily price
Room single bed	€ 739	€ 247	€ 49
Room double bed	€ 785	€ 262	€ 53
Studio double bed	€ 859	€ 286	€ 57
Large family room	€ 1017	€ 339	€ 68
Minimum stay of 4 nights.			

	KARIBU ≤ 3 MONTHS		
Type	Monthly price	Weekly price	Daily price
Room single bed	€ 814	€ 271	€ 54
Room double bed	€ 861	€ 288	€ 57
Studio double bed	€ 946	€ 316	€ 63
Large family room	€ 1120	€ 373	€ 75
Minimum stay of 4 nights.			

Rental prices include communal costs and a fortnightly cleaning.
 Cost of water, heating, electricity and internet: a fixed fee of €200
 is applied for the total rental period.

ITM students and guests receive 10% reduction on the rental
 price.

Exterior, entrance and terrace



Room and private bathroom



Kitchen & sitting area



CAPACITY

- 24 rooms with private bathroom
- 3 common equipped kitchens
- Washing machine, dryer and iron at your disposal
- Communal terrace

ROOMS

- Single bed with bedside table
- Desk with chair, wardrobe, bookshelves
- WIFI internet
- Television
- Bathroom with toilet, shower and laundry basket
- Towels, bedding and duvet are provided
- Refrigerator in the room
- Fortnightly cleaning service

PRICES

	Monthly price	Weekly price	Daily price
Stay > 3 months	€ 714	€ 238	€ 48
Stay ≤ 3 months	€ 785	€ 262	€ 53
Minimum stay of 4 nights.			

Rental prices include communal costs and a fortnightly cleaning. Cost of water, heating, electricity and internet: a fixed fee of €200 is applied for the total rental period.

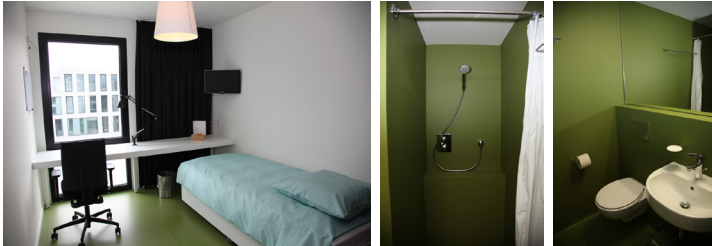
ITM students and guests receive 10% reduction on the rental price.

NAMASTE: Bogaardestraat 8

Exterior & entrance



Room and private bathroom



Kitchen



CAPACITY

- 16 rooms with private bathroom
- 2 duplex flats with private facilities (bathroom and kitchenette)
- 2 shared equipped kitchens
- Washing machine, dryer and iron at your disposal
- Terrace

ROOMS

- Single bed
- Desk with chair, wardrobe, bookshelves
- WIFI Internet
- Television
- Bathroom with toilet, shower and laundry basket
- Refrigerator in the room
- Towels, bedding and duvet are provided

The duplex flats have a double bed

PRICES

BOGAARDESTRAAT 8 NAMASTE ROOMS

	Monthly price	Weekly price	Daily price
Stay > 3 months	€ 675	€ 225	€ 45
Stay ≤ 3 months	€ 750	€ 250	€ 50

BOGAARDESTRAAT 8 NAMASTE STUDIO

	Monthly price	Weekly price	Daily price
Stay > 3 months	€ 859	€ 286	€ 57
Stay ≤ 3 months	€ 946	€ 316	€ 63

Minimum stay of 4 nights.

Rental prices include communal costs.

There is no cleaning of the rooms in this facility, only the mutual parts will regularly be cleaned by our cleaning service.

Cost of water, heating, electricity and internet: a fixed fee of € 200 is applied for the total rental period.

ITM students and guests receive 10% reduction on the rental price.

Reservation

To make a reservation, please send an email to studentsupport@itg.be with following information:

- Name of guest/student
- Date of arrival and departure
- Type of room

ATTENTION!

For every booking, a non-refundable advance payment of €200 is requested.

The rental agreement can be terminated by the tenant before the rental agreement comes into effect. If this happens more than three months before the start of the rental agreement, it is free of charge. If the tenant terminates the lease less than three months before it comes into effect, the student has to pay a penalty equal to two months' rent to the landlord.

In case the student cancels the lease because of cancellation of the studies and he/she provides us with an attestation from the university/institute, no penalties will be applied.

In case the student terminates the lease before the end date because of termination of the studies and he/she provides us with an attestation from the university/institute, only the effective stay will be charged.

Different terms and conditions apply to group reservations.

For more information, please contact studentsupport@itg.be.

Some house rules

- Smoking is prohibited in the whole building.
- No pets are allowed.
- Keys can be collected and returned to the Student Support during office hours (Monday-Friday 8:30 a.m. - 5:00 p.m.). If you arrive before or after office hours, you can collect the key from the security guard (24/7).

Prices valid as from May 2026