

Ready to take your career to the next level?

Specialise in tropical medicine,
international public health or
global One Health at the Institute
of Tropical Medicine in Antwerp.

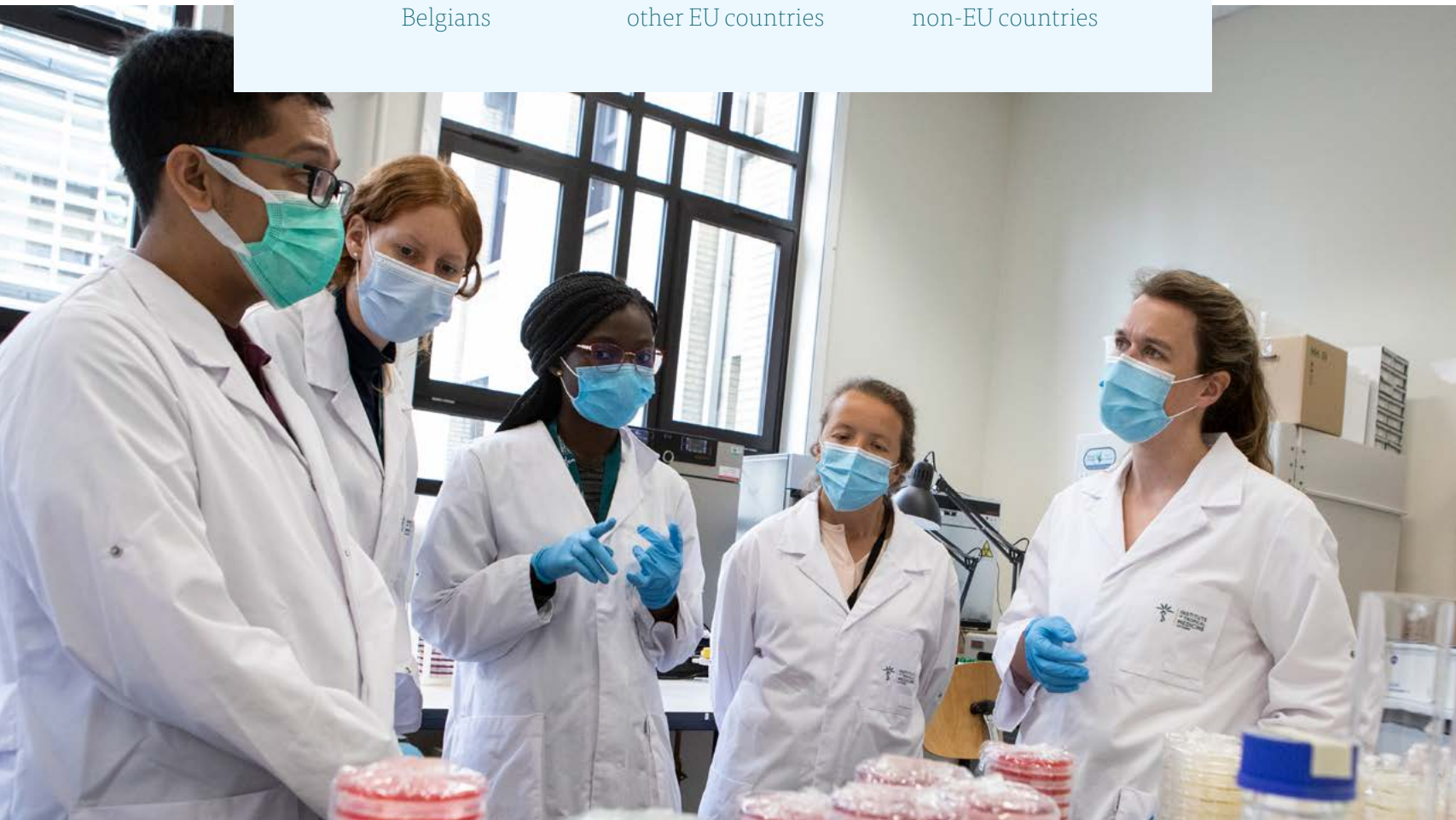
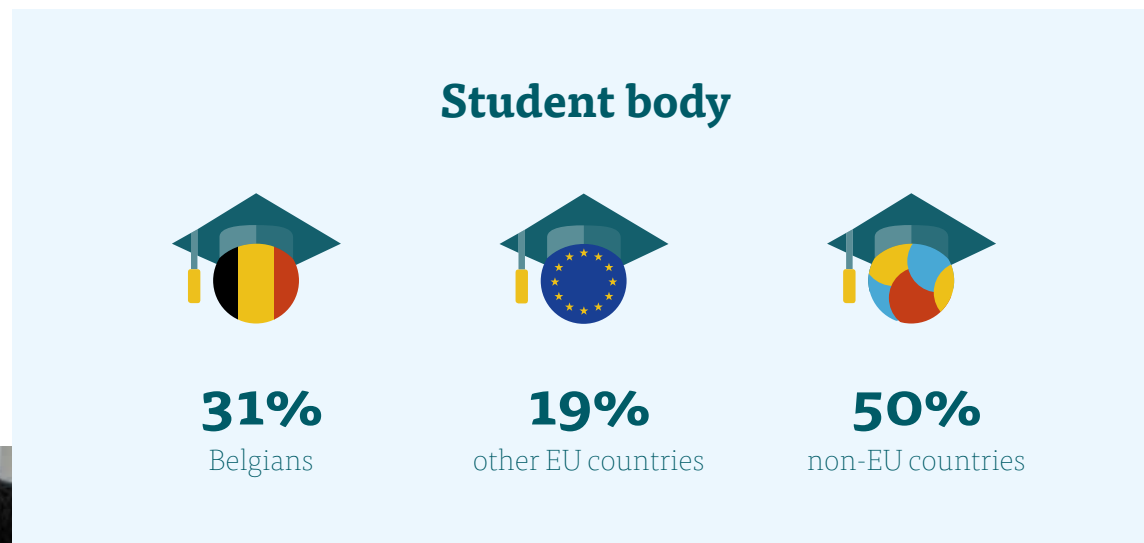


**INSTITUTE
OF TROPICAL
MEDICINE**
ANTWERP

Is studying at ITM for you? Find a course that fits your needs.

We have a variety of study options – long and short – for tropical medicine, international public health and global One Health, depending on where you are on your professional journey. You can focus on the clinical, biomedical, epidemiological, socio-political, organisational and policy aspects of health and health care. We also have a number of scholarships on offer.

For a detailed overview of our courses, visit www.itg.be/study



Why is studying at ITM special?

The diverse cultural and professional backgrounds of the international student group and teaching staff enable a rich exchange, comparative analysis and confrontation of ideas. ITM graduates leave very satisfied, have lifelong membership to our alumni network and lasting scientific relations, and they very often come back.

1. Flexible programmes

To optimise your career and study needs, mix and match elective courses at ITM and our partner institutes worldwide. We also offer individual study programmes, lifelong learning opportunities and evening seminars.

2. We'll help you make your professional dream a reality

Graduates go on to a wide variety of career paths including public health, research, NGOs, government, academia, and medical positions, worldwide.

3. Our experienced professors and their personalised teaching style

They are your study partners – sharing their expertise and acting as catalysts – pushing you to learn through personal participation. ITM professors work in the field, collaborate on research worldwide, and are internationally recognised. Lecturers have a diverse background, and include experts from partner institutions and former students.

4. Over a century of experience

Established in 1906, we have evolved from a small training institution into an international academic, scientific, and medical institute dedicated to advancing science and health worldwide.

5. Stress-free tailored student support

You'll experience student services that help you every step of the way, so that you can concentrate on what's important: your study.

6. Mixed course offer

Apart from on-campus learning, we offer an MSc programme and some short courses fully online, and there are also hybrid courses available to fit student needs.





Follow our expert short courses and postgraduate certificate programmes

25+ different short courses

...with credit certificates on specialised topics in biomedical, clinical and public health sciences. They can be taken as stand-alone courses or as part of a certificate or degree programme.

Postgraduate certificates

Are you a nurse, clinician, public health professional or researcher, eager to broaden your horizons in health? Are you interested in international health and its research, in a world where tropical diseases are not confined to the tropics? Our postgraduate certificate programmes focus on health challenges in vulnerable settings across the globe, allowing for more diversity in our study groups. These will enrich you personally and professionally, whether you are working in Europe or elsewhere in the world.

We offer four certificate programmes of 20-25 ECTS, each suited to student needs and specific career aspirations. Two of the programmes are also offered in French.



Is ITM your next step?

Find out which course is best for you and apply online.

www.itg.be/study

Get your master's degree at ITM

Proudly, all ITM courses are accredited within the exceptionally high standards of the Accreditation Organisation of Flanders and the Netherlands (NVAO).

MSc in Global One Health: Diseases at the Human-Animal Interface

This programme (our former MSc in Tropical Animal Health) is offered in collaboration with the University of Pretoria, South Africa, and combines online modules, on-campus skills training, field and bench work. It focuses on health at the interface of humans, animals and the ecosystem and provides practical One Health approaches to address multifaceted regional and global challenges.

MSc in Tropical Medicine

This flexible programme aims to develop research skills on diagnosis and management of the most prevalent and re-emerging tropical diseases in the world; to strengthen training in research techniques and methods in the clinical and biomedical fields, and to contribute to the development of research capacity in resource-constrained settings.

MSc in Public Health with focus on Health Systems and Disease Control

This programme focuses on the organisation of health services, programmes, and systems, and on policymaking in resource-constrained settings, zooming in on people in vulnerable situations. It aims at enhancing the students' capacity to analyse complex health problems, design and implement effective and responsive strategies, and to assess their effects in terms of health outcomes, equity and empowerment of people and communities.



PhD - The next step in your scientific career

The PhD programme is based on the expertise of ITM and your academic home institution, resulting in a PhD degree awarded by a renowned university. Currently, around 100 students do research at ITM. Half of them come from Africa, Asia and Latin America.



Manfreddy Binyet from Cameroon **MSc in Public Health 2022-2023**

“Studying at such a renowned institution like ITM gave me so much more than my degree: open mindedness and critical thinking. In the classes the bar was always high, but our lecturers were very accessible. The cultural diversity of the classmates helped us learn to appreciate many different contexts. It’s been an honour to have studied at an institution which, knowing many alumni, shaped exceptional people.”

Institute of Tropical Medicine
Foundation of Public Utility
Nationalestraat 155, 2000 Antwerp, Belgium
T: +32 3 247 66 66
itmedu@itg.be
RPR 0410.057.701 - IBAN BE38 2200 5311 1172

- [f ITGITMantwerp](#)
- [@itmantwerp](#)
- [@institute-of-tropical-medicine](#)
- [@ITMantwerp @TropischITG](#)

www.itg.be